

NAILS PRICE LIST

LAVISH HERITAGE HILL





**Welcome to Lavish
Heritage Hill, your oasis
in the whirlwind of life.**



The image features a white semi-transparent overlay with a repeating pattern of light brown triangles. The triangles are arranged in a staggered, overlapping fashion, creating a geometric design. The background is a photograph of a modern, bright interior space, likely a lounge or cafe, with a white tiled floor, a white wall, and a ceiling with a decorative floral pattern. In the foreground, there is a gold-colored bar cart with various bottles and glasses. In the background, there are pink chairs and a table, and a large potted plant.

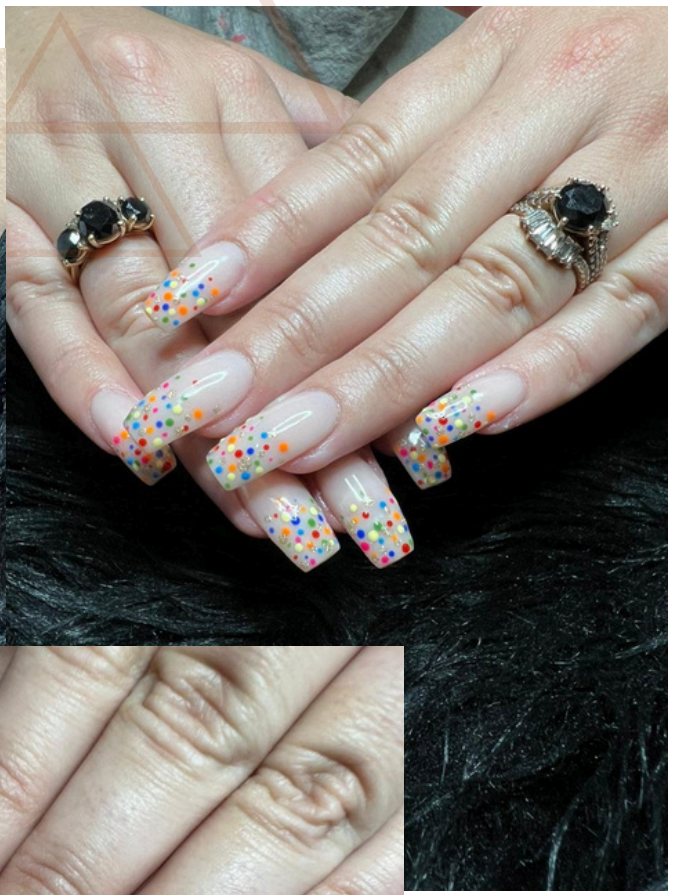
WORD FROM THE OWNER



ZILMA

Making you feel confident and beautiful is our goal. We want you to be able to unwind and let your hair down. You deserve a bit of time for yourself.

Being a mother myself I understand that finding time for yourself is not always possible, but when it is we will be here to help you look and feel your best.



NAILS

Nele - GEL

	<u>Natural</u>	<u>Tips</u>
Overlay	R395	R445
French Overlay	R420	R465
Overlay - Toes	R240	X
French - Toes	R260	X



NAILS

ACRYLIC

	<u>Natural</u>	<u>Tips</u>
Fill	R395	X
Overlay	R420	R465
French Overlay	R425	R485
Ombre	R445	R495

LAVISH
HERITAGE HILL



NAILS

EXTRAS

Art

R30

Repair

R25

Soak - Toes

R65

Soak - Hands

R70

Fix

R45

Buff & Paint

R125

LAVISH
HERITAGE HILL



LAVISH

HERITAGE HILL

www.lavishheritagehill.co.za

BOOK NOW

061 433 5878

Online Booking

BEAUTY PRICE LIST

LAVISH HERITAGE HILL





FACIALS

30 MIN 45 MIN 60 MIN

pH Formula	R650	R750	R850
QMS - Consultation	X	R400	X
QMS - Activator	X	X	R790
QMS - Deep Cleanse	X	X	R725
QMS - Sensitive Skin	X	R650	X
QMS - Urban Repair	X	R850	X
QMS - Neo Tissue (90min)			R1000
QMS - Collagen Rejuvenation (90min)			R900

DERMAPLANING

Add to Any Facial	R350
On its Own	R450

DERMAPEN

Face	R1250
Face & Neck	R1500
Face, Neck & Decollete	R1750
Upper Arms	R500
Love Handles	R1000



WAXING

Brow	<i>R95</i>
Lip	<i>R85</i>
Chin	<i>R95</i>
Cheek	<i>R110</i>
Full Face	<i>R310</i>
Underarms	<i>R110</i>
Half Arm	<i>R130</i>
Full Arm	<i>R210</i>
Half Leg	<i>R210</i>
Full Leg	<i>R270</i>
Bikini	<i>R220</i>
Brazilian	<i>R280</i>
Hollywood	<i>R300</i>



MASSAGE

	<u>30 MIN</u>	<u>45 MIN</u>
Indian Head Massage	R285	X
Back, Neck & Shoulder	R375	R425
Foot	R180	X
Hand	R180	X
Foot & Scrub	R200	X
Hand & Scrub	R200	X
QMS Collagen Rejuvenation		
QMS Neo Tissue		

LAVISH
HERITAGE HILL

FULL BODY

	<u>60 MIN</u>	<u>90 MIN</u>
Swedish Full Body	R520	R820
Hot Stone Full Body	R630	X
Aromatherapy Full Body	R565	X
Soya Candle	R850	R1100



MANI & PEDI

	<u>Express</u>	<u>Deluxe</u>
Manicure	R185	R285
Pedicure	R220	R300

SPRAYTAN

Full Body

R550

TINTING

Brow

R85

Lash

R95

LAMINATION

Brow

R380

Lamination & Tint

R450

Lamination & Tint & Shape

R520

A photograph of a spa treatment room. In the foreground, a bed is covered with a white textured blanket and a pink towel. A white coat rack stands in the center. To the left, a large round mirror reflects a desk with a lamp and a framed picture. The room has light pink walls and a white ceiling.

**Don't let the hustle
hinder your glow. Book
your consultation today
and step into a world
designed just for you**



LAVISH

HERITAGE HILL

www.lavishheritagehill.co.za

BOOK NOW

061 433 5878

Online Booking

DIODE LASER PRICE LIST

LAVISH

HERITAGE HILL





How It Works

The procedure works by directing a concentrated beam of light into hair follicles. The pigment in the follicles absorbs the light, which destroys the hair. This makes it a more permanent solution compared to shaving or waxing.



MOST POPULAR

	<u>Ladies</u>	<u>Gents</u>
Underarms	R250	R350
Hollywood	R500	R699
Hollywood Extended	R999	R1199
Leg excl Knee (Both)	R1199	R1199
Full Leg (Both)	R1999	R2499
Full Chest & Tummy	R1999	R1999

BIKINI

	<u>Ladies</u>	<u>Gents</u>
Sides	R250	R500
Top	R200	R400
Brazilian Strip	R500	XXX
Brazilian Extended	R600	XXX

We Use

Diode Laser Technology

Diode lasers are typically more efficient at hair removal because they use a single, concentrated wavelength of light.

Diode laser machines often incorporate cooling mechanisms that can make the treatment **LESS PAINFUL than IPL.**

Diode lasers can be used on a wider range of skin types, including darker and tanned skin.

Some advanced diode lasers even offer customizable treatments depending on skin and hair type, ensuring optimal results.



BACK

	<u>Ladies</u>	<u>Gents</u>
Mini Lower Back	R500	R600
Shoulders	R700	R900
Half Back	R999	R1200
Full Back	R2000	R2500

ARMS

	<u>Ladies</u>	<u>Gents</u>
Fingers *	R99	R99
Hands *	R150	R150
Half Arm *	R450	R500
3/4 Arm* *	R600	R700
Full Arm *	R850	R1000

(*Both)

Multiple Sessions Required

Laser hair removal usually requires several sessions to ensure all hair in the growth phase is treated. The number of sessions needed can vary based on the person's hair type, hair color, skin tone, and the area of the body being treated.





FACE

Ladies & Gents

Upper or Lower Lip	R150
Chin	R150
Chin ext	R200
Unibrow	R99
Upper Lip & Chin	R300
Under Jawline	R300
Ears	R99
Shave Lines	R150
Nose	R99
Nasal Hair	R99
Forehead	R200
Sideburns	R150
Cheeks	R250
Front Neck	R300
Full Neck	R400
Full Face	R600
Full Beard	R500
Beard Excl Neck	R350

How often?

Diode Laser Hair Removal –
Typically, initial sessions are spaced four to six weeks apart. This is because the treatment is most effective during the hair's anagen phase (growth phase), and each hair on your body goes through this phase at different times. After the initial treatments, follow-up sessions may be needed once or twice a year to maintain the results, as new hair growth or hormonal changes can stimulate new hair growth.



LEGS

	<u>Ladies</u>	<u>Gents</u>
Toes	R99	R99
Feet Excl Toes (Both)	R150	R150
Feet (Both)	R199	R199
Legs Incl Knee (Both)	R1500	R1500
3/4 Legs (Both)	R1750	R1750

OTHER

	<u>Ladies</u>	<u>Gents</u>
Chest	R750	R750
Cleavage	R150	R200
Tummy	R700	R700
Belly Button Path	R200	R200
Belly Button Path Ext	R250	R300
Full Buttocks	R500	X
Lower Buttocks	R300	X
Full Head	R700	R700

Discounts

We want to make Laser Hair Removal possible for everyone. That is why our prices are already the best in this space.

BUT

You are able to save an additional 10%, if you combine areas and the total value of your single session is more than R2 000.

We no longer offer a standard discount for courses, instead, we will quote you individually according to your needs.



LAVISH

HERITAGE HILL

www.lavishheritagehill.co.za

BOOK NOW

061 433 5878

Online Booking